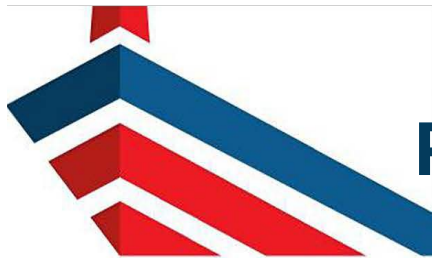


**ARX**

## **Product Information**





# Product Information - Barrier

**Product Name:** ABaC Barrier

**Product Code:** AB01 (02)

**Colour(s):** Orange, Black

**Weight:** 13kg

**Dimensions:** H1365mm x W700mm x D775mm

**Material Composition:** Virgin Grade Polyethylene Powder with 5% UV Stabiliser

**HS Code:** 3925100000

**IMPA Code:** 314127

**Country of Origin:** UNITED KINGDOM



## Product Description:

The ARX ABaC Barrier is an innovative defensive solution to prevent unwanted personnel (using ladders, poles and ropes) from boarding a vessel.

## Key Product Benefits:

Sustainable and cost-effective denial of access. Maritime Security solution used to protect commercial sea vessels passing through High-Risk Areas.

Manufactured to the highest standard using rotational moulding method for long term durability and usage.

## Key Product Features:

Unique patented design that allows for each unit to be self-installed with speed and strapped to vessel guardrail.

Fend plate design along with innovative ribbed surface will repel hooked ladders and climbing poles to defeat rope based climbing systems.

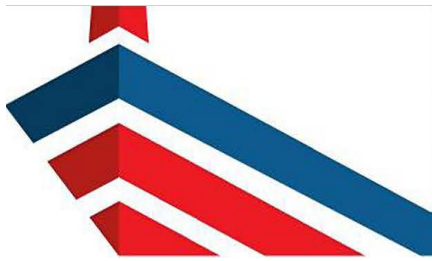
Allows sea water to wash through and can therefore remain in situ throughout voyage.



## Barrier Standards:

ASTM D 1238, 792, 638, 790, 2240. U V Stabilized stable weather, Low Warpage, Copolymer, Chemical Resistance, Environmental Stress Crack Resistance. Fire resistant to EN 1925-2. EN12 195-2





# Product Information – Mounting Panel

**Product Name:** ABaC Mounting Panel

**Product Code:** ABMP01 (02)

**Colour(s):** Orange, Black

**Weight:** 4kg

**Dimensions:** H1183mm x W500mm x D25mm

**Material Composition:** Virgin Grade Polyethylene Powder with 5% UV Stabiliser

**HS Code:** 3925100000

**IMPA Code:** 314127

**Country of Origin:** UNITED KINGDOM



## Product Description:

The ARX ABaC Mounting Panel is a complimentary product for use with the AbaC Barrier when required to prevent boarding to the areas of the vessel with panama chocks and or rolling fairleads.

## Key Product Benefits:

The ARX ABaC Mounting Plate offers full hardening protection when used in conjunction with the ABaC Barrier.

Manufactured to the highest standard using rotational moulding method for long term durability and usage.

## Key Product Features:

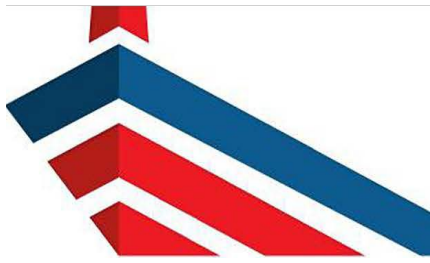
Unique patented design that for each unit can be self-installed with speed and strapped to support the AbaC Barrier to provide complete coverage of the deck required.



## Barrier Standards:

ASTM D 1238, 792, 638, 790, 2240. U V Stabilized stable weather, Low Warpage, Copolymer, Chemical Resistance, Environmental Stress Crack Resistance. Fire resistant to EN 1925-2. EN12 195-2





# Product Information – Corner Units

**Product Name:** ABaC Corner Units

**Product Code:** ABC451351(2); ABC751051(2); ABC90901(2) ABC120601(2); 150301(2)

**Colour(s):** Orange, Black

**Weight:** 19kg or 25 kg

**Dimensions:** H1365mm x W1537mm x D775mm

**Material Composition:** Virgin Grade Polyethylene Powder with 5% UV Stabiliser

**HS Code:** 3925100000

**IMPA Code:** 314127

**Country of Origin:** UNITED KINGDOM



## Product Description:

The ARX ABaC Corner Units are complementary products for use with the ABaC Barrier to fill any corner on the deck that requires hardening.

## Key Product Benefits:

The ARX ABaC Corner Units offer full hardening protection when used in conjunction with the ABaC Barrier.

Manufactured to the highest standard using rotational moulding method for long term durability and usage.

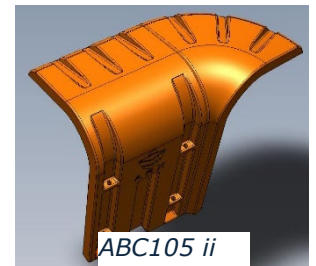
## Key Product Features:

Configuration to suit angle of any corner. Turn provided:

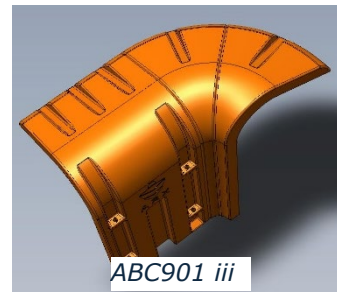
- i. 135 degree
- ii. 105 degree
- iii. 90 degree
- iv. 60 degree
- v. 30 degree.



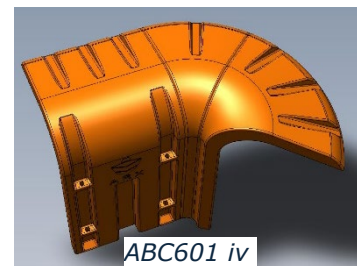
ABC1351 i



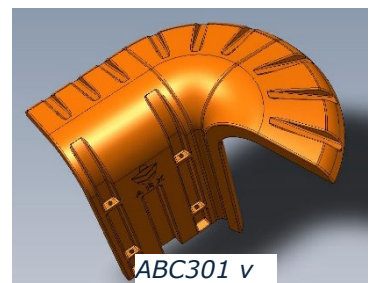
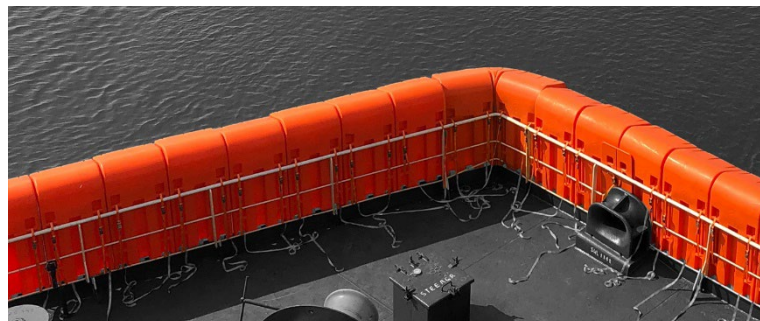
ABC105 ii



ABC901 iii



ABC601 iv



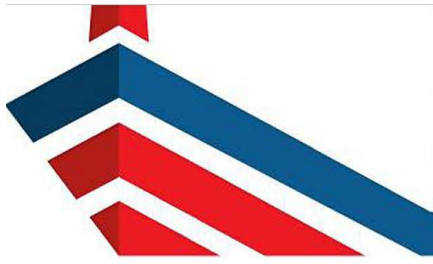
ABC301 v

## Barrier Standards:

ASTM D 1238, 792, 638, 790, 2240. U V Stabilized stable weather, Low Warpage, Copolymer, Chemical Resistance, Environmental Stress Crack Resistance. Fire resistant to EN 1925-2. EN12 195-2







# Product Information – Retaining Strap

**Product Name:** ABaC Retaining Strap

**Product Code:** ABST01 (02)

**Colour(s):** Orange

**Weight:** 0.3kg

**Dimensions:** H4mm x W25mm x L3000mm

**Material Composition:** 316 Stainless Steel Grade Ratchet, 100% Polyester Strapping.

**HS Code:** 6307909899

**IMPA Code:** 314127

**Country of Origin:** UNITED KINGDOM



## Product Description:

The ARX ABaC Strap is a fixing solution used to secure the ABaC barrier to vessels guard rail.

## Key Product Benefits:

The ABaC strap is a robust and secure fixing solution which incorporates a 316 Grade SS ratchet for maritime use.



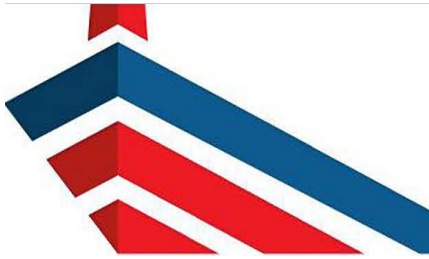
## Key Product Features:

Endless 3m convenient length LC 800 daN, BF 1600KG, Elongation < 7% @ L.



## Strap Standards:

BSEN 12195-2TUV and GUS tested.



# Product Information – Single & Double Support Rail

**Product Name:** ABaC Support Rail – Single and Double

**Product Code:** ABSSR, ABDSR

**Colour(s):** Galvanized

**Weight:** 11 and 14kg

**Dimensions:** W 640mm x H 980mm and W 1271mm x H 980mm

**Material Composition:** Galvanized Steel and Malleable Iron.

**HS Code:** 7308990990

**IMPA Code:** 314127

**Country of Origin:** UNITED KINGDOM



---

## Product Description:

The ARX ABaC Support Rail is a bespoke removable guardrail allowing the crew to attach the ABaC Barrier.

## Key Product Benefits:

The ABaC Support Rail offers a unique temporary solution to those vulnerable areas of a vessel that do not have a guard rail.

## Key Product Features:

Made to the highest specification and galvanized for marine grade use.

Easily removed to give access to the gangway during port operations.

Allows for full perimeter protection of vessel whilst transiting HRA.



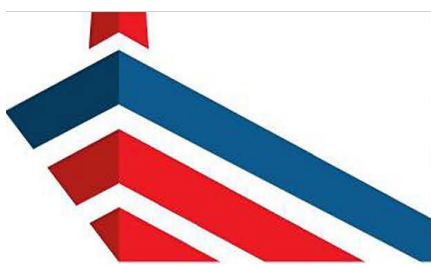
---

## Railing Standards:

Tubes - Steel: EN 10255 | Tube Clamps: Malleable Iron to BS 6681

Hot - Dipped Galvanized: EN 10240





# Product Information – Storage Bin

**Product Name:** AbaC Storage Bin

**Product Code:** ARX SB

**Colour(s):** Orange

**Weight:** 11kg

**Dimensions:** W950mm x H630mm and D550mm

**Material Composition:** Low-density Polyethylene (LDPE).

**HS Code:** 3925100000

**IMPA Code:** 314127

**Country of Origin:** UNITED KINGDOM



## Product Description:

The ARX Storage Bin is a lockable storage bin ideal for safely securing straps and other ancillary products.

## Key Product Benefits:

The ABaC Storage Bin offers a robust storage solution.  
Capacity: 200kg

## Key Product Features:

Waterproof.  
Built in locking capability  
Can be provided in other colours, if required  
UV stabilized.



## Bin Standards:

ASTM D 1238, 792, 638, 790, 2240. U V Stabilized stable weather, Low Warpage, Copolymer, Chemical Resistance, Environmental Stress Crack Resistance. Fire resistant to EN 1925-2.  
EN12 195-2

